

RedBlack is an Addepar Premier Partner for rebalancing and trading

Working hand-in-hand

RedBlack has extensive experience onboarding Addepar clients of all sizes and can manage many of the complex security types that a typical Addepar client may utilize, including:

- SMAs
- Alternatives
- Private placements





RedBlack can manage complex portfolios at scale

Enterprise-level reliability for RIAs of all sizes



Monitoring
Monitor portfolios at the account or household level



Pre-trade compliance
Ensure alignment of clients' investments with IP statements and specific needs



Rebalancing and trading
Differentiate and scale growth with advanced rebalancing plus directed trading



Review and approval
Contextually review and approve trades



Order management
Streamline workflows while achieving best execution



Post-trade compliance
Protect clients while reducing risk and errors

RedBlack by the numbers

15+
years serving investment management firms

30%
of the largest advisory firms use RedBlack

10
industry awards in the last 3 years

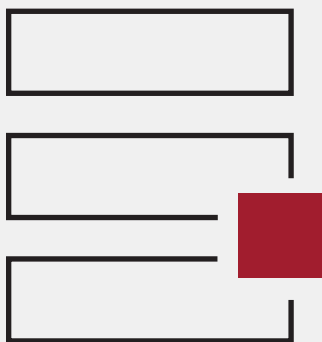
+\$900B
assets managed on platform

Integration features

Data stored in Addepar is populated within RedBlack, enabling advisors to efficiently perform security-level rebalancing and trading, and maintain portfolios within targeted allocations.

Standard data

- Import security master and classifiers
- Import accounts
- Import positions and balances
- Import trade lots
- Import transactions



Enhanced data

- Import household structure
- Import model assignments
- Import IPS assignments
- Import advisor assignments
- Import SMA details
- Import custom fields
- Import ownership structure
- Import cost basis methods

Coming soon

- Single-sign-on (SSO)
- Addepar trading dashboard integration
- Automated data import



Key benefits of using RedBlack + Addepar together



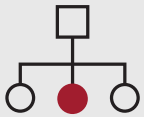
Single source of truth

Access your aggregated and reconciled data from Addepar to monitor and maintain portfolios within target allocations with confidence.



Simplified rebalancing and trading

The integration allows advisors to access data, perform security-level rebalancing, execute trades, and manage liquidity – all in one place to simplify the process.



Automated and flexible workflows

The integration is flexible enough to automate desired workflows and adapt to changing needs as business evolves.

Addepar's Premier Partners have unique access to product roadmaps, development tools, dedicated support and collaboration opportunities in order to develop superior integrations that empower our mutual clients.



redblacksoftware.com

info@redblacksoftware.com

© RedBlack Software, LLC

